



Key Features

- Six (6) strain Bacillus blend providing optimal activity and enzyme production across a broad range of environmental conditions
- Enhances the effectiveness of most biological waste treatment systems used to treat organic material
- Effective growth and treatment across broad pH and temperature ranges
- Facultative organisms - works in both aerobic and anaerobic environments
- All natural, non-toxic, and non-GMO
- Stable - two year shelf life

Key Benefits

IMPROVES OPERATIONS

- Reduces COD/BOD levels
- Reduces sludge accumulation
- Reduces odor generation
- Improves nutrient removal

DECREASES COSTS

- Reduces aeration costs
- Reduces chemical costs
- Reduces sludge removal and disposal costs

Applications

- Ponds, Lakes, Ditches
- River water systems
- Water retention ponds
- Water storage reservoirs
- Brackish and saline water systems
- Lagoon systems



PRODUCT SPECIFICATIONS:

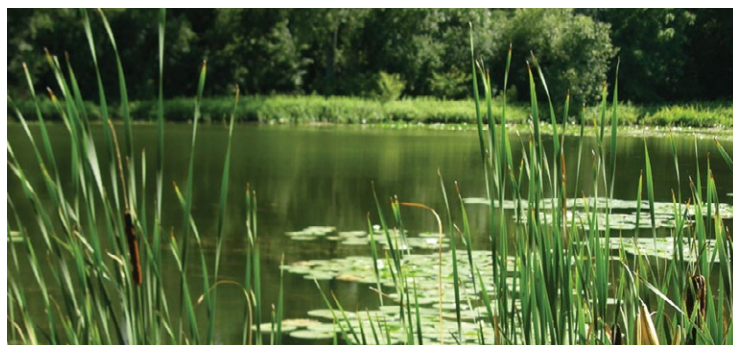
APPLICATION GUIDELINES:

BioPro Pond Dosage

Week 1	0.5 ppm	Monitor for excessive sludge turn over, reduce dosage to 0.25ppm/week as required
Week 2	0.5 ppm	Monitor for excessive sludge turn over, reduce dosage to 0.25ppm/week as required
Week 3	1.0 ppm	<ul style="list-style-type: none"> Dosage can be increased as required Note: Overdosing high sludge ponds will release excess nitrogen and rapidly deplete oxygen levels
Week 4	1.0 ppm	<ul style="list-style-type: none"> Dosage can be increased as required Note: Overdosing high sludge ponds will release excess nitrogen and rapidly deplete oxygen levels

APPLICATION NOTES:

- This ppm treatment assumes little to no incoming water
- If currently struggling with algae and using copper sulfate, continue chemical usage for one season while treating sludge. The following season copper sulfate usage may be reduced or eliminated.
- Copper sulfate effectiveness drops as pH and alkalinity increases



Storage & Handling

Dry and Cool (36-77°F/2-25°C)

- Note: Keep container closed tightly when not in use.
- Shelf Life: Two years when stored as recommended.

Microbiological Specifications

- Total count available: 4 Billion CFU/g of active Bacillus
- Coliforms < 10 CFU/g
- Salmonella negative/25 g

Physical Properties

- Color: Tan
- Form: Powder
- Packaging: Dried powder on bran carrier

Carrier

Bran in water soluble packet

Concentration

4 Billion CFU/g